

PLAT No 4 OF
WYNNEWOOD ACRES

A SUBDIVISION OF PART OF THE NW 1/4 OF
THE NW 1/4 OF THE SW 1/4 OF SECTION 26, T43S,
R42E, PALM BEACH COUNTY, FLORIDA.

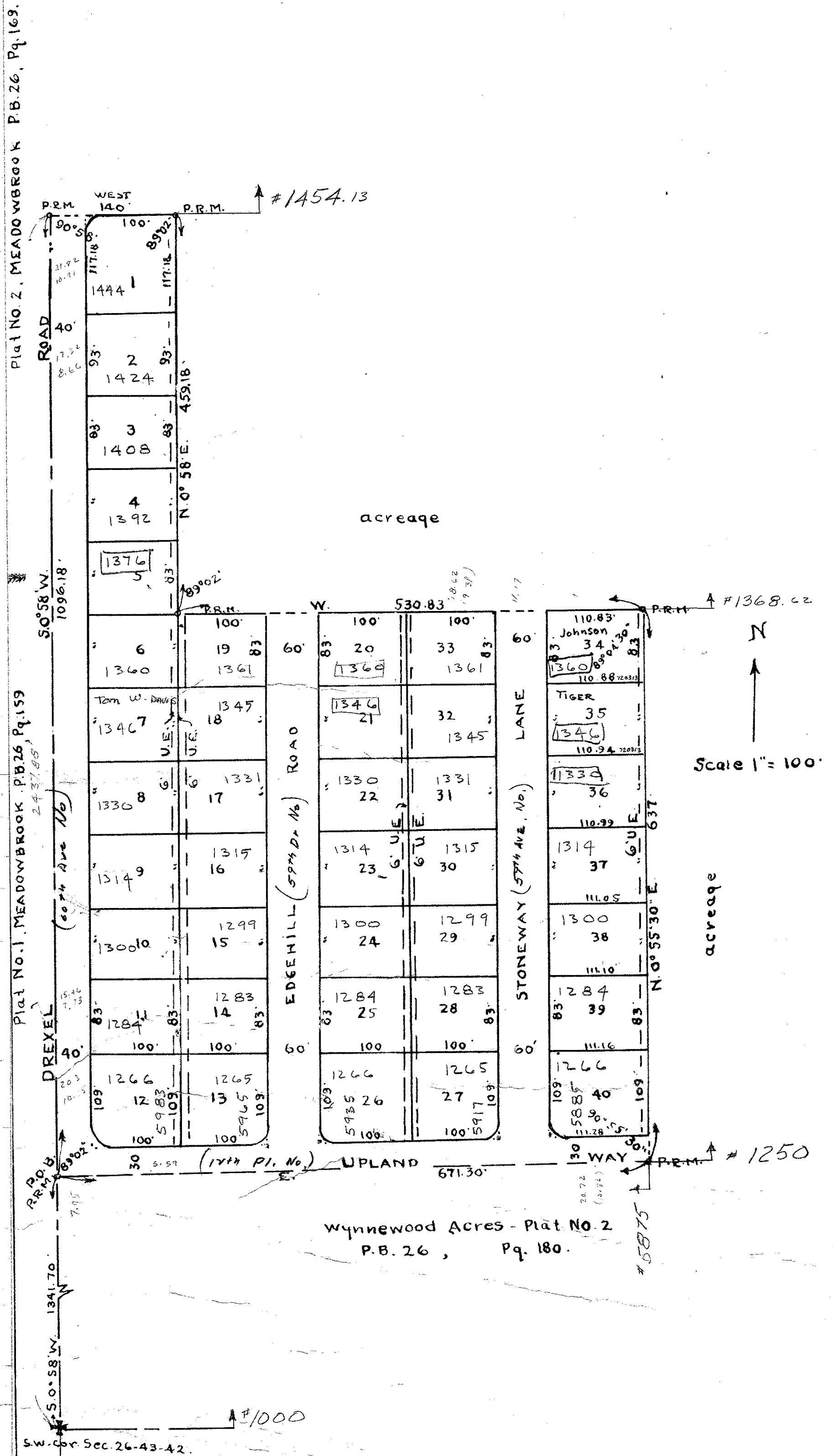
RECEIVED BY THE
COUNTY CLERK
THIS 27th day of August 1961
at 3:43 P.M.
J. W. Blackman

DRAWING NUMBER
27-21

DRAWING NUMBER

DRAWING NUMBER

DRAWING NUMBER



There shall not be any buildings on utility easements.
There shall not be any buildings or any kind of construction or planting of trees or shrubs on drainage easements.
Easements are for public utilities unless shown.
Building set-back lines shall be as required by the Palm Beach County Zoning Commission.
Intersection block corners arcs, where shown, have a 25' radius, and dimensions are to P.I.

DEDICATION
STATE OF FLORIDA } 55
COUNTY OF PALM BEACH }
Know all men by these presents that A. & J. DEVELOPERS, Inc. of West Palm Beach, Florida is owner in fee simple of a tract of land shown on this plat as WYNNEWOOD ACRES PLAT NO. 4, located in Palm Beach County, Florida and described as follows:
Beginning at the SW corner of the NW 1/4 of the SW 1/4 of Sec. 26-42-42, 90 E. 671.30'; thence N. 0° 55' 30" E. 637'; thence W. 530.83'; thence N. 0° 58' 00" E. 459.18'; thence W. 140' to the W. line of said Sec. 26; thence S. 0° 58' 00" W. 102.18' to the point of beginning, and by and with the authority of the Board of Directors has caused the same to be surveyed and platted as shown hereon and has hereby dedicated the perpetual use of the public as public highways all Roads, Lanes, Ways as shown hereon and the owner also dedicates to the perpetual use of the public the easements shown hereon for the purposes as stated on this plat.
In witness whereof, the said corporation has caused these presents to be signed by its President and attested by its Secretary and its corporate seal affixed hereto by and with the authority of its Board of Directors this 5th day of June 1961.

A and J. Developers, Inc.
By Joel Courtman President
Attest Allen E. Smalen Secretary

ACKNOWLEDGEMENT
STATE OF FLORIDA } 55
COUNTY OF PALM BEACH }
I hereby certify, that on this day personally appeared before me, an officer duly authorized to administer oaths and take acknowledgements Joel Courtman and Allen E. Smalen, personally known and known to be President and Secretary respectively of A. and J. DEVELOPERS and they acknowledged before me that they executed the foregoing instrument in their official capacity as the act and of said company and by and with the authority of the company. Witness my hand and official seal at West Palm Beach, Florida this 5th day of June 1961.
Subscribed and sworn to before me this 5th day of June A.D. 1961.
My commission expires: April 10, 1964.

STATE OF FLORIDA } 55
COUNTY OF PALM BEACH }
I hereby certify that the plat shown hereon is a true and correct representation of a survey made by me and is accurate to the best of my knowledge and belief, and that permanent reference monuments (P.R.M.) have been set as required by law.
Karl Riddle
Registered Land Surveyor
Fla. Cert. No. 250.
Final date of survey 5-27-61.

APPROVED: July 31 A.D. 1961.
Board of County Commissioners
By: Alfred M. Smith County Engineer
By: L. E. Pflum Vice Chairman

Subscribed and sworn to before me this 5th day of June 1961.
My commission expires: April 10, 1964.
Allen E. Smalen Notary Public
1000-268
(27-21)
26/43/42